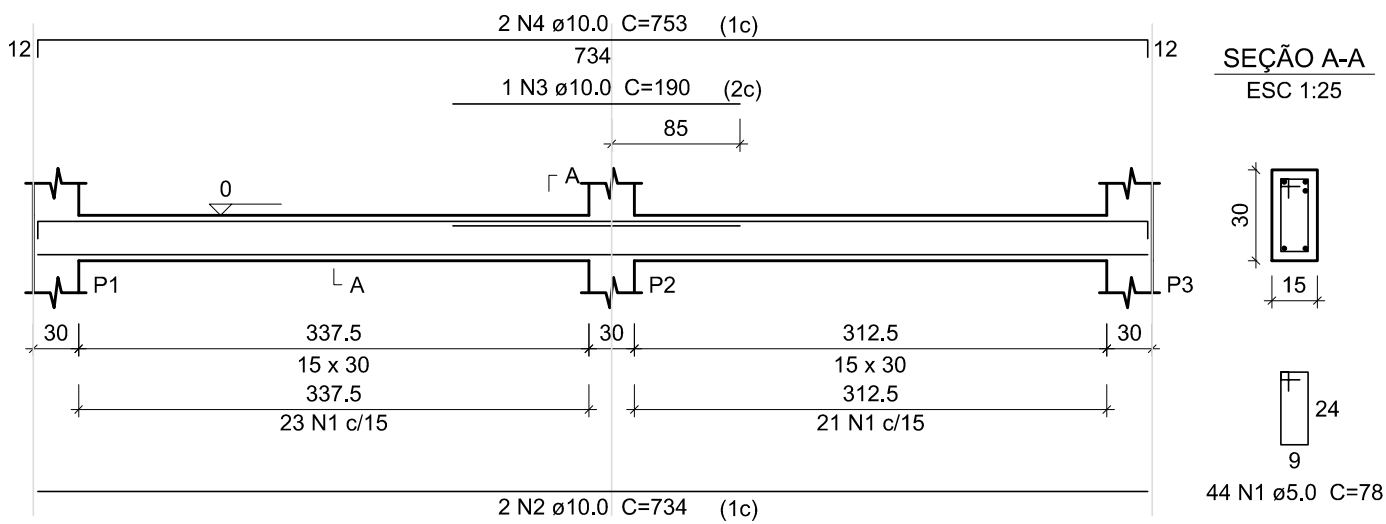
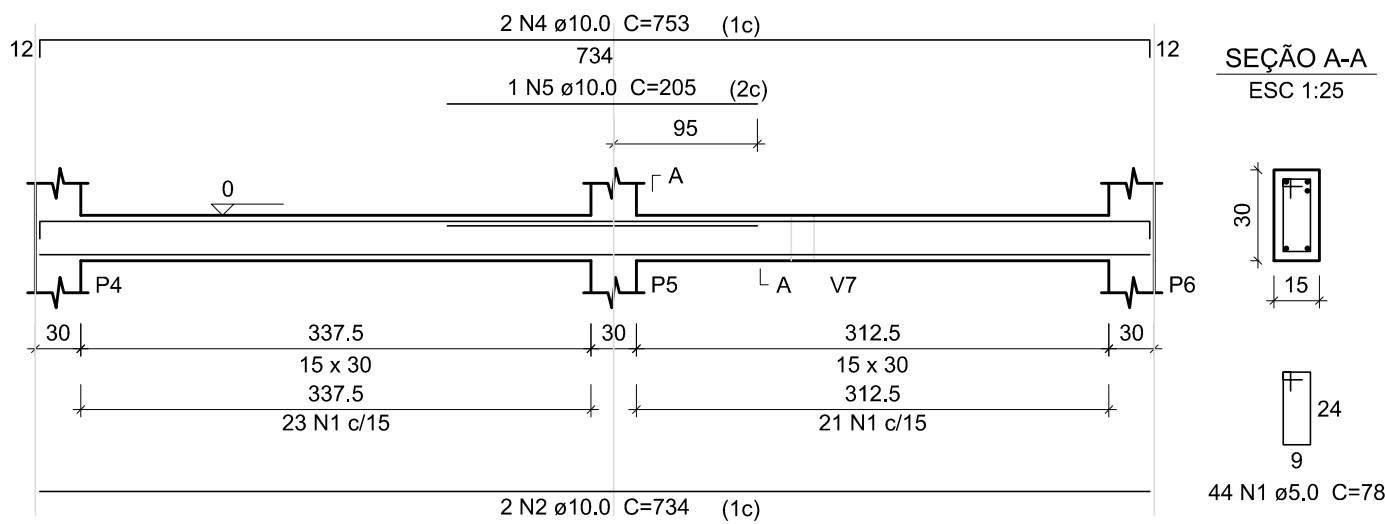


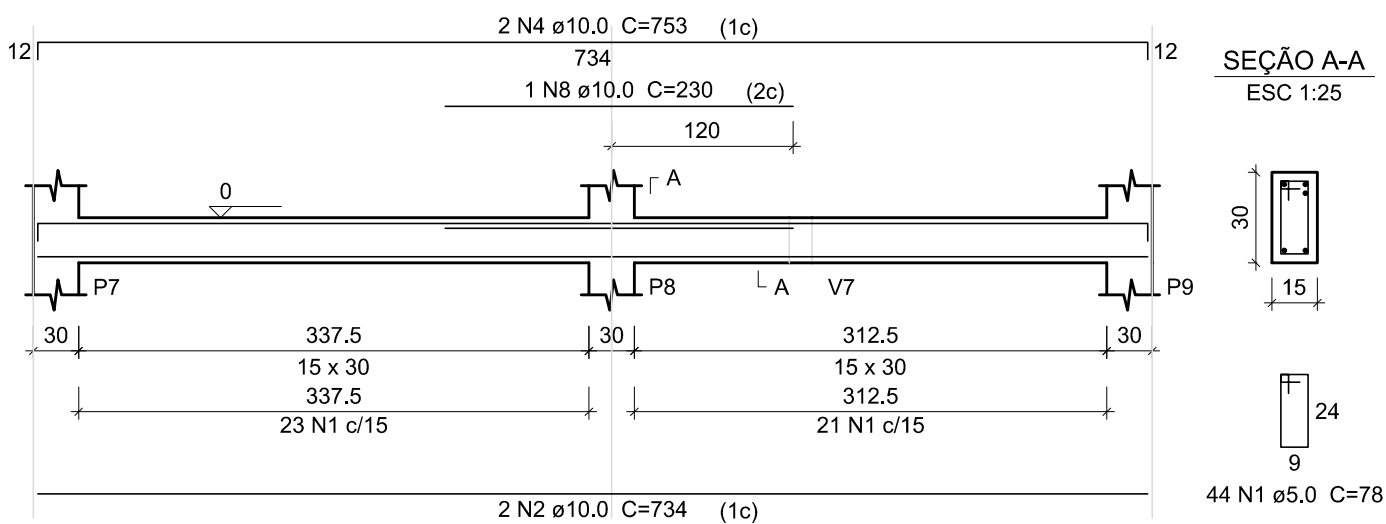
V1
ESC 1:50



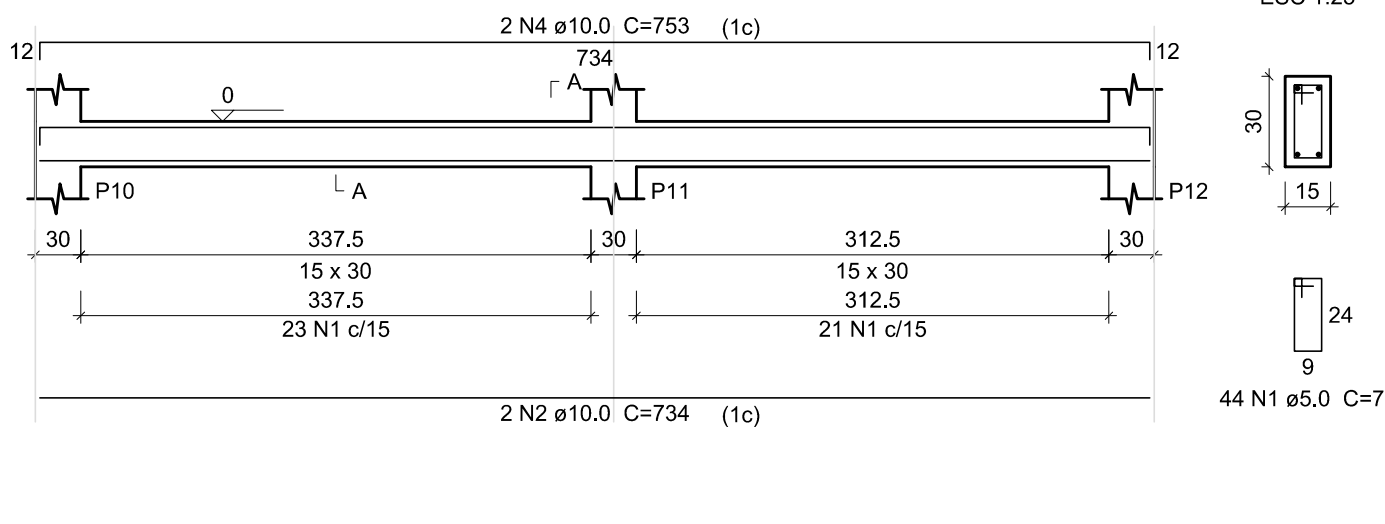
V2
ESC 1:50



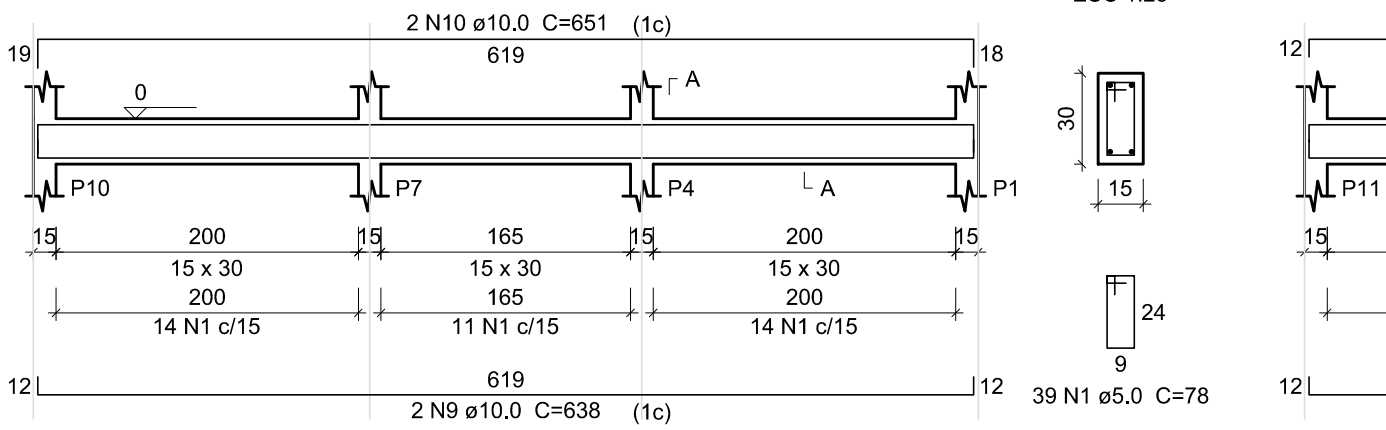
V3
ESC 1:50



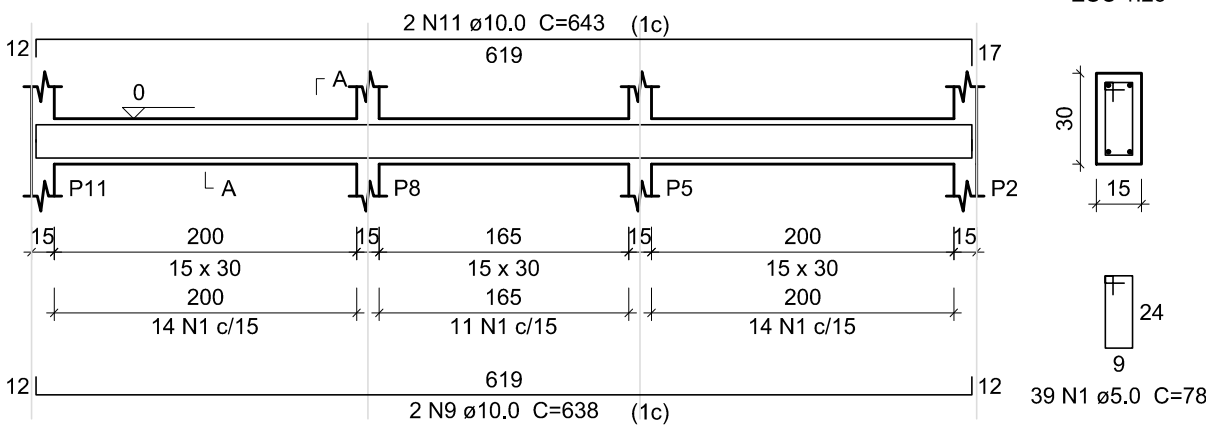
V4
ESC 1:50



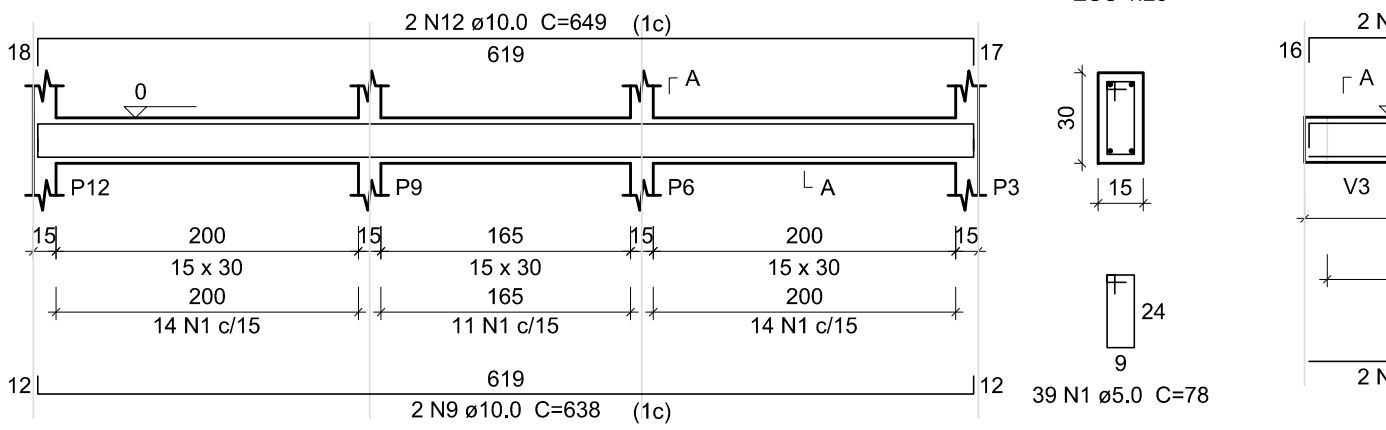
V5
ESC 1:50



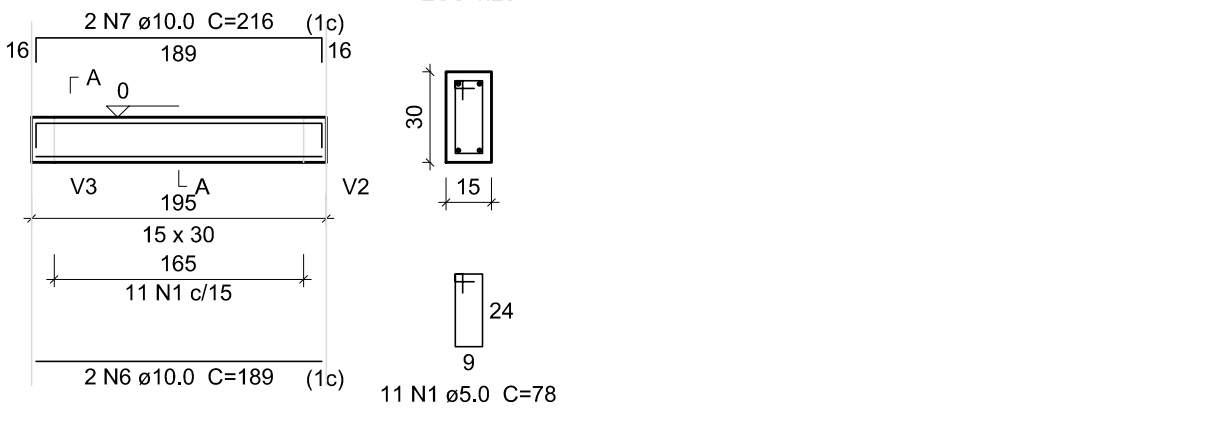
V6
ESC 1:50



V8
ESC 1:50



V7
ESC 1:50



Relação do aço

AÇO	N	DIAM (mm)	QUANT	C.UNIT (cm)	C.TOTAL (cm)
CA60	1	5.0	304	78	23712
CA50	2	10.0	8	734	5872
	3	10.0	1	190	190
	4	10.0	8	753	6024
	5	10.0	1	205	205
	6	10.0	2	189	378
	7	10.0	2	216	432
	8	10.0	1	230	230
	9	10.0	6	638	3828
	10	10.0	2	651	1302
	11	10.0	2	643	1286
	12	10.0	2	649	1298

Resumo do aço

AÇO	DIAM (mm)	C.TOTAL (m)	PESO (kg)
CA50	10.0	210.5	129.8
CA60	5.0	237.2	36.5
PESO TOTAL (kg)			
CA50	129.8		
CA60	36.5		

Volume de concreto (C-25) = 2.26 m³
Área de forma = 37.73 m²

Prefeitura
Municipal de
Rolante

obra:
Pavilhão das Cuqueiras

local:
Rua Júlio Kohlrausch, 524 - Rolante/RS

prancha:
Estrutural - Sanitários - Detalhamento vigas do térreo nº: **25/30**

extensão/área: **665,10m²** escala: **indicada** unidade: **centímetro** data: **FEV./2016**



Ademir Gomes Gonçalves
prefeito municipal
Luciana Gabriele Renck
eng. civil - CREA RS 193.127
Av. Getúlio Vargas, 110 | Centro | Rolante/RS | CEP 95690-000
(51) 3547.1188 | www.prefrolante.com.br